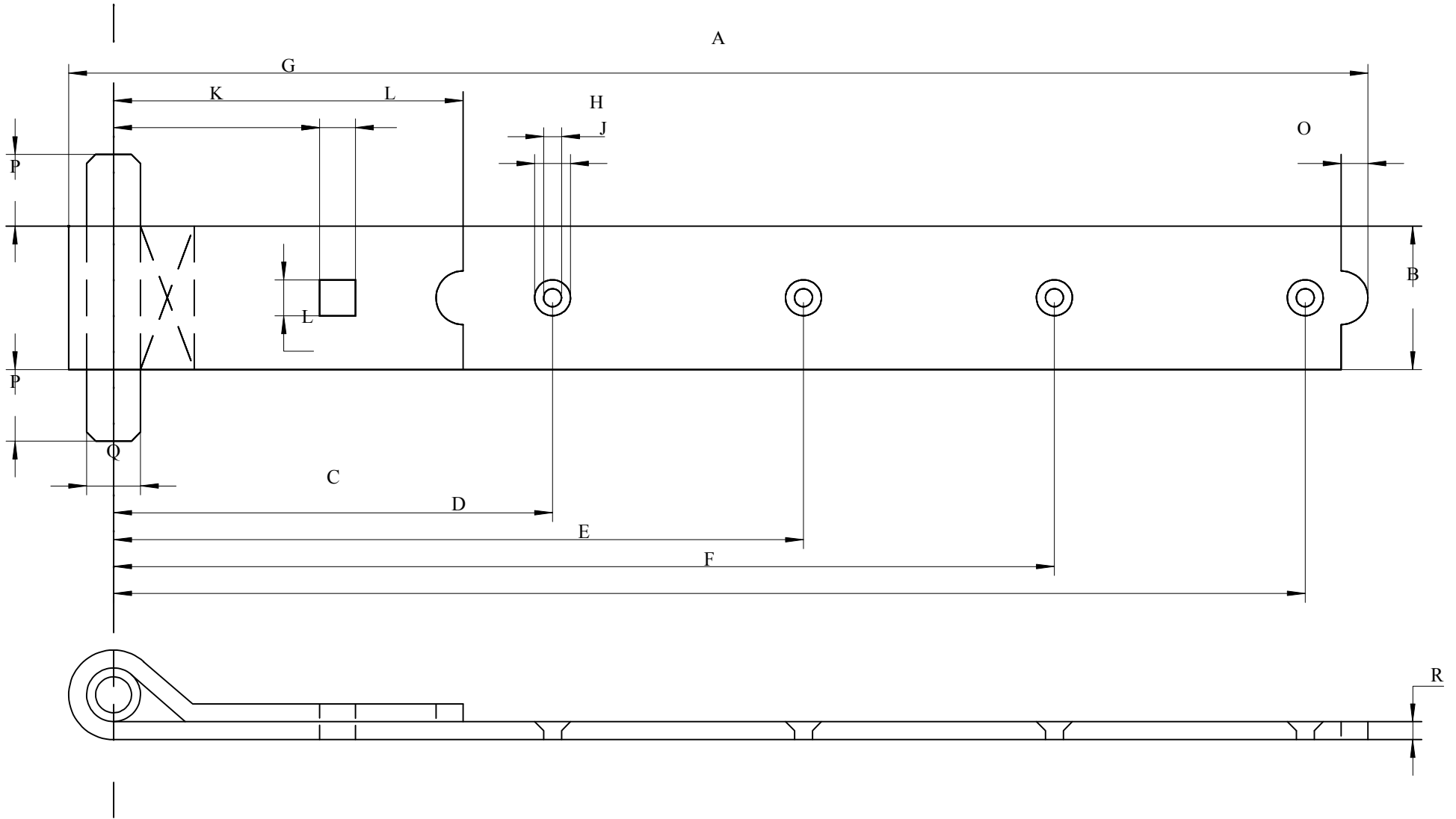


SNUG COTTAGE IMPORTS (8292 OLD FASHIONED STRAP HINGE SPEC SHEET)
see accompanying Dimensions and Sizes Sheet



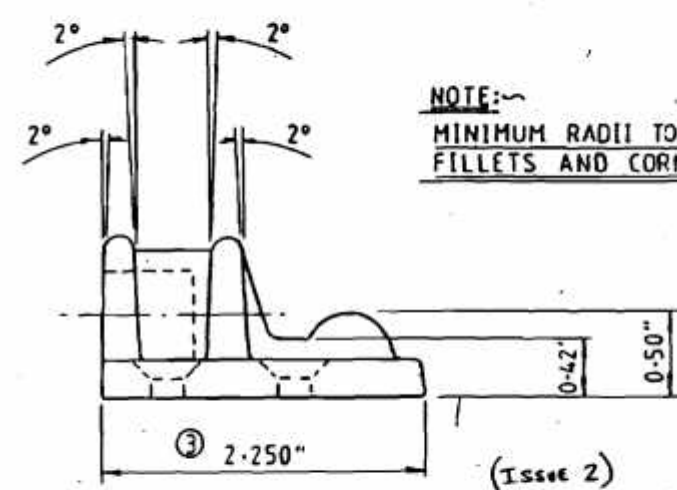
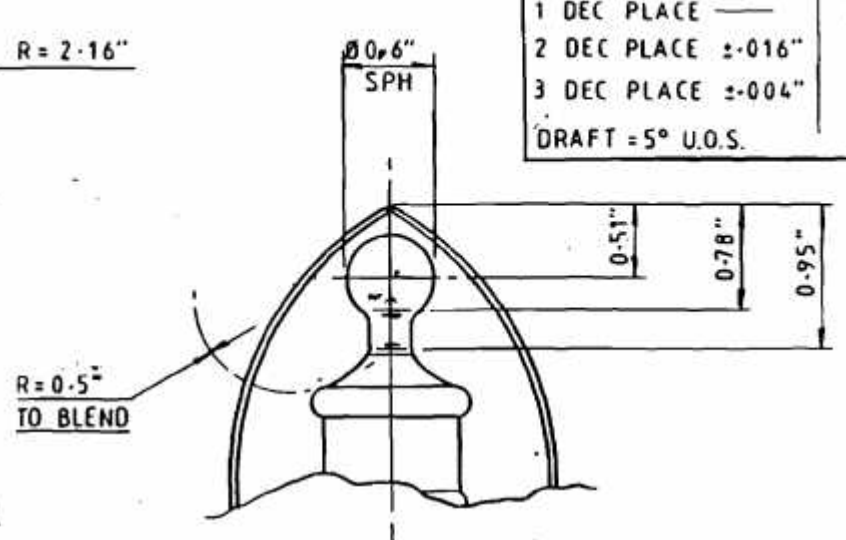
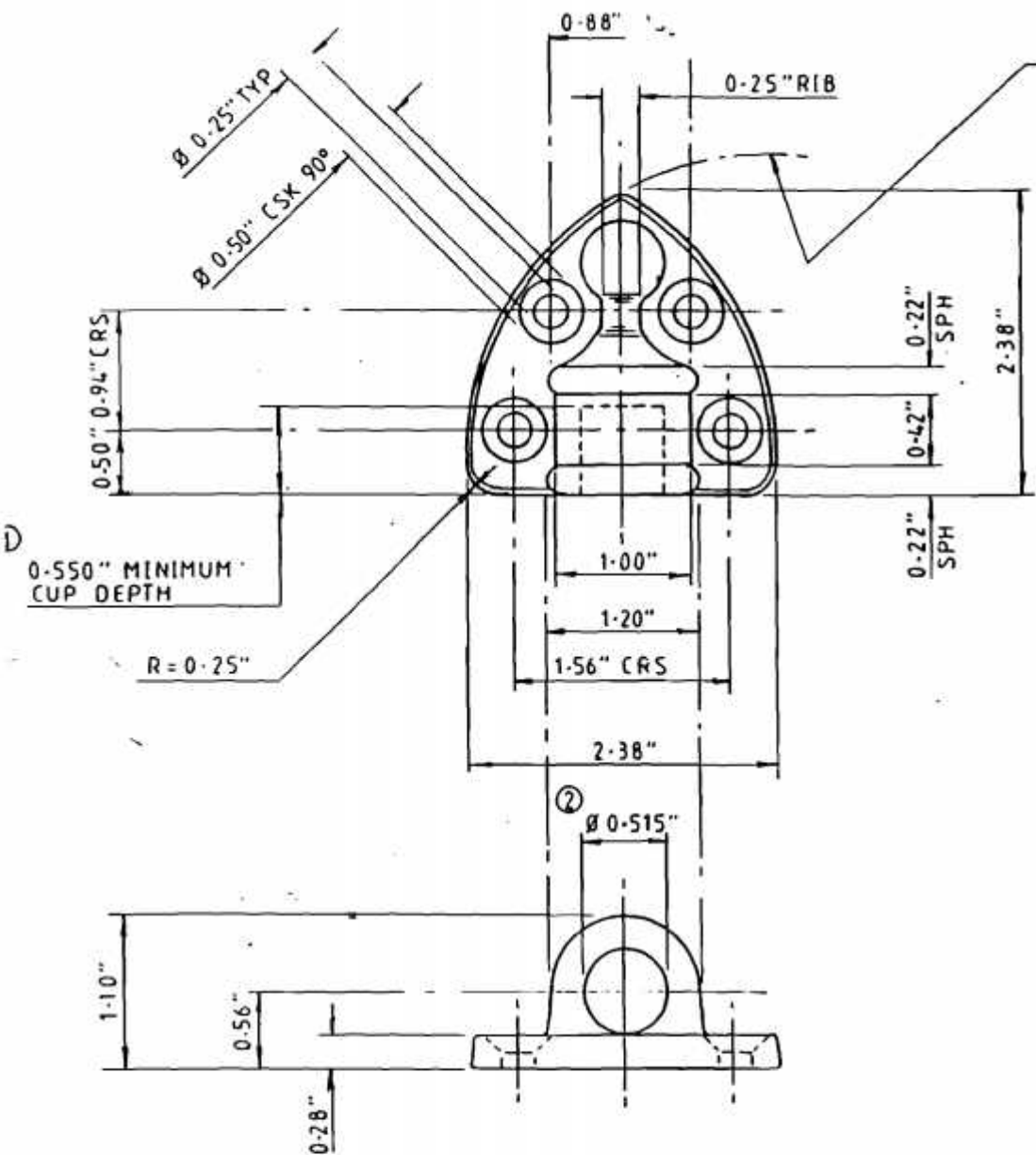
SNUG COTTAGE IMPORTS
 Old Fashioned Heavy Duty Hinges (8292)
 Dimensions and Sizes

Strap Length (inches)	DIMENSION (inches)														
	A	B	C	D	E	F	G	H	J	K	L	O	P	Q	R
7	7	1.5	6.125	NA	NA	NA	4	0.25	0.5	2.375	7/16" for 3/8" carriage bolt	0.375	0.75	0.5	0.1875
12	12	1.5	6	NA	NA	10.875	4.125	0.25	0.5	2.5	7/16" for 3/8" carriage bolt	0.375	0.75	0.5	0.1875
14	14	1.5	6.625	NA	NA	12.875	4.125	0.25	0.5	2.5	7/16" for 3/8" carriage bolt	0.375	0.75	0.5	0.1875
16	16	1.5	6	11	NA	15	4.125	0.25	0.5	2.5	7/16" for 3/8" carriage bolt	0.375	0.75	0.5	0.1875
18	18	2	6.75	11.625	NA	16.5	5.625	0.25	0.5	3.25	9/16" for 1/2" carriage bolt	0.5	1	0.625	0.1875
20	20	2	8.5	13.5	NA	18.5	4.875	0.25	0.5	3.25	9/16" for 1/2" carriage bolt	0.5	1	0.625	0.1875
24	24	2.25	7.5	15.5	NA	22.5	5	0.25	0.5	3.25	9/16" for 1/2" carriage bolt	0.625	1	0.625	0.1875
30	30	2.25	12.5	21	NA	29	5.375	0.25	0.5	3.75	9/16" for 1/2" carriage bolt	0.625	1	0.75	0.1875
36	36	2.25	12.5	21	28.75	34.75	5.375	0.25	0.5	3.75	9/16" for 1/2" carriage bolt	0.625	1	0.75	0.1875
48	48	2.75	11.125	23	34.75	46.5	5.375	0.25	0.5	3.75	9/16" for 1/2" carriage bolt	0.625	1	0.875	0.25

* Screw hole locations are +/- 0.125 inches
 NA = Not Applicable for this size

12/8/2009

TOLERANCE - TOP	METRIC
1 DEC PLACE	±.4 mm
2 DEC PLACE	±.016"
3 DEC PLACE	±.004"
DRAFT = 5° U.S.	



NOTE:~
MINIMUM RADII TO ALL
FILLETS AND CORNERS

965	SBM
962	GALV
961	SC
REF	FINISH

(Issue 2)

TITLE
**"HEAVY REVERSIBLE HINGE
 CUP N°2"**
 For 7", 12", 14", & 16"

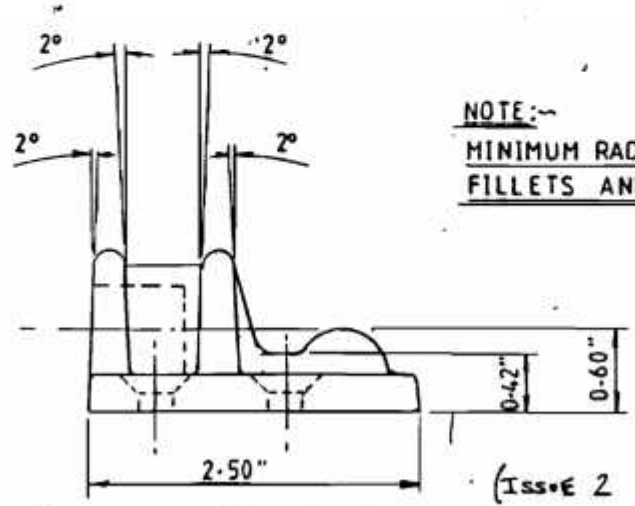
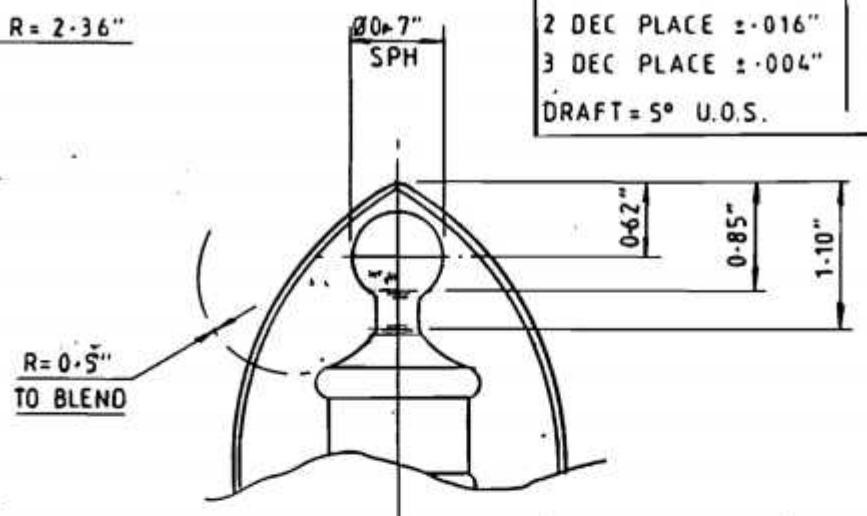
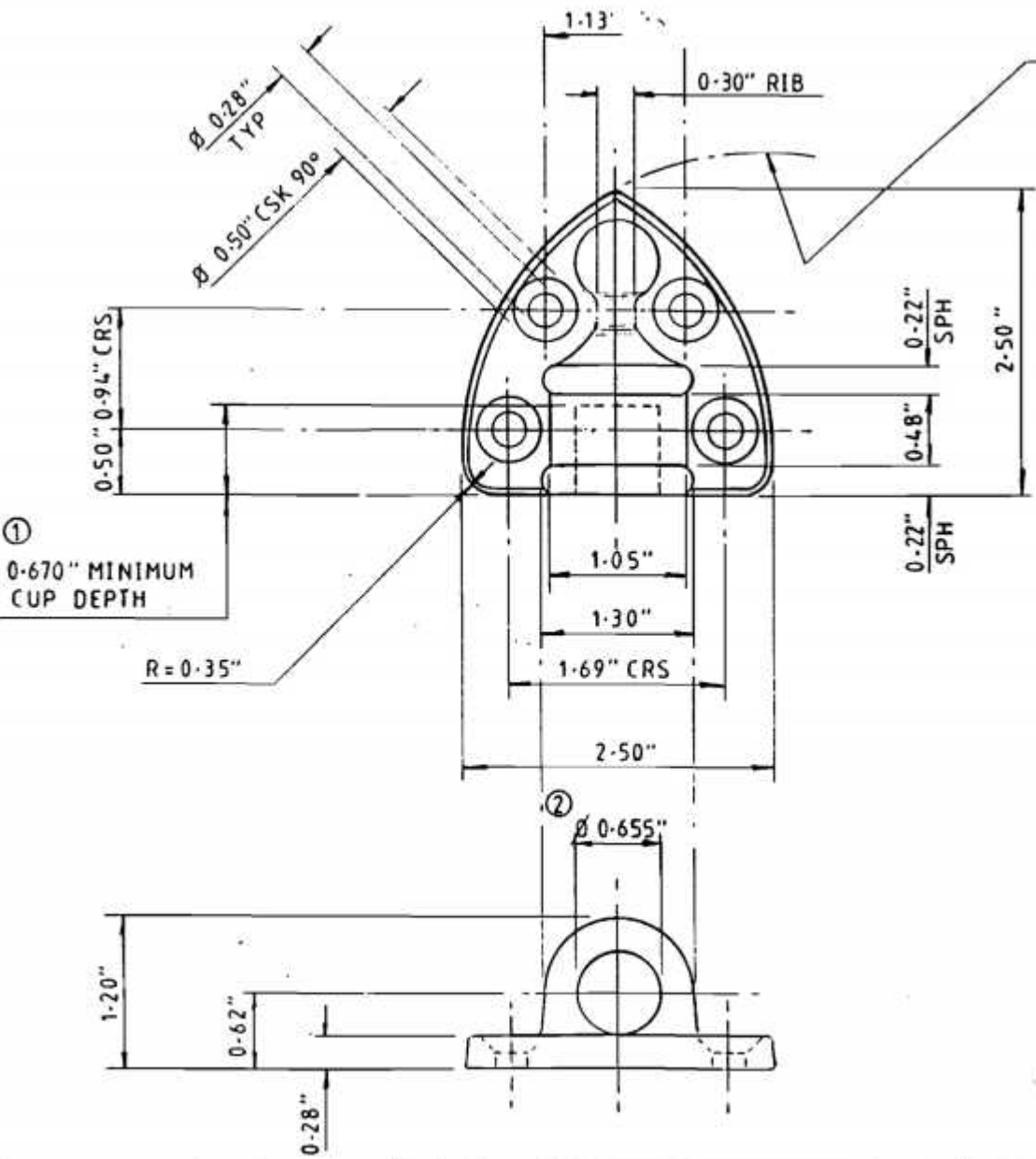
DATE 16/12/13
 DRAWN
 SCALE
 DO NOT SCALE

MATL
 MALL' CAST IRON
 FINISH
 SEE CHART
 TREATMENT

REF	DATE	REMARK
③	JAN '93	WAS 2.38"
②	JAN '93	WAS 0.56"
①	JAN '93	ADDED

ORG - 965
 - 962
 8292-961
 (SHT 3 OF 5)

TOLERANCE -	IMP	METRIC
1 DEC PLACE	—	± .4 mm
2 DEC PLACE	± .016"	± .1 mm
3 DEC PLACE	± .004"	—
DRAFT = 5° U.O.S.		



NOTE:~
MINIMUM RADII TO ALL
FILLETS AND CORNERS

975	SBM
972	GALV
971	SC
REF	FINISH

TITLE
"HEAVY REVERSIBLE HINGE
CUP N°3"
 From 18" 20" & 20"

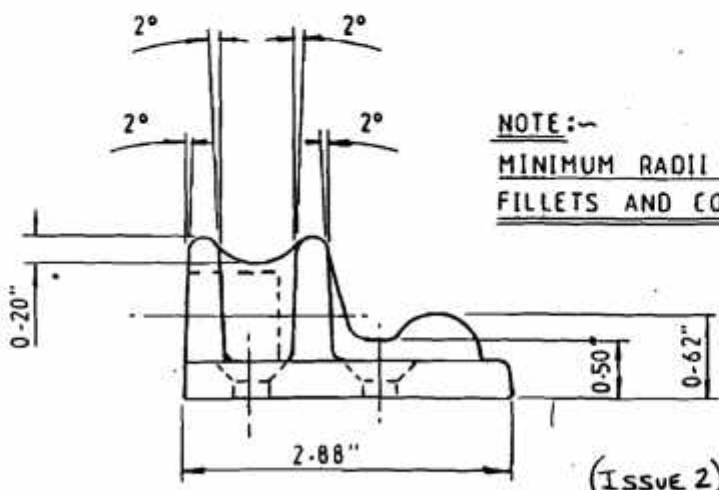
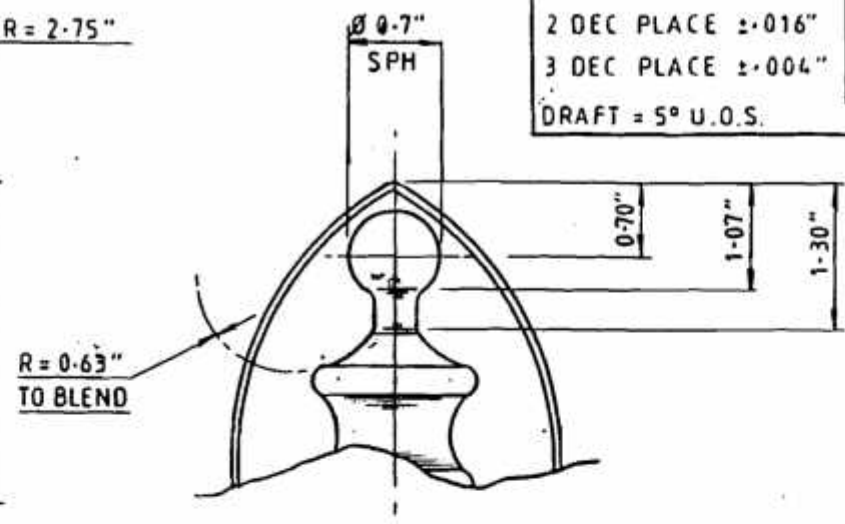
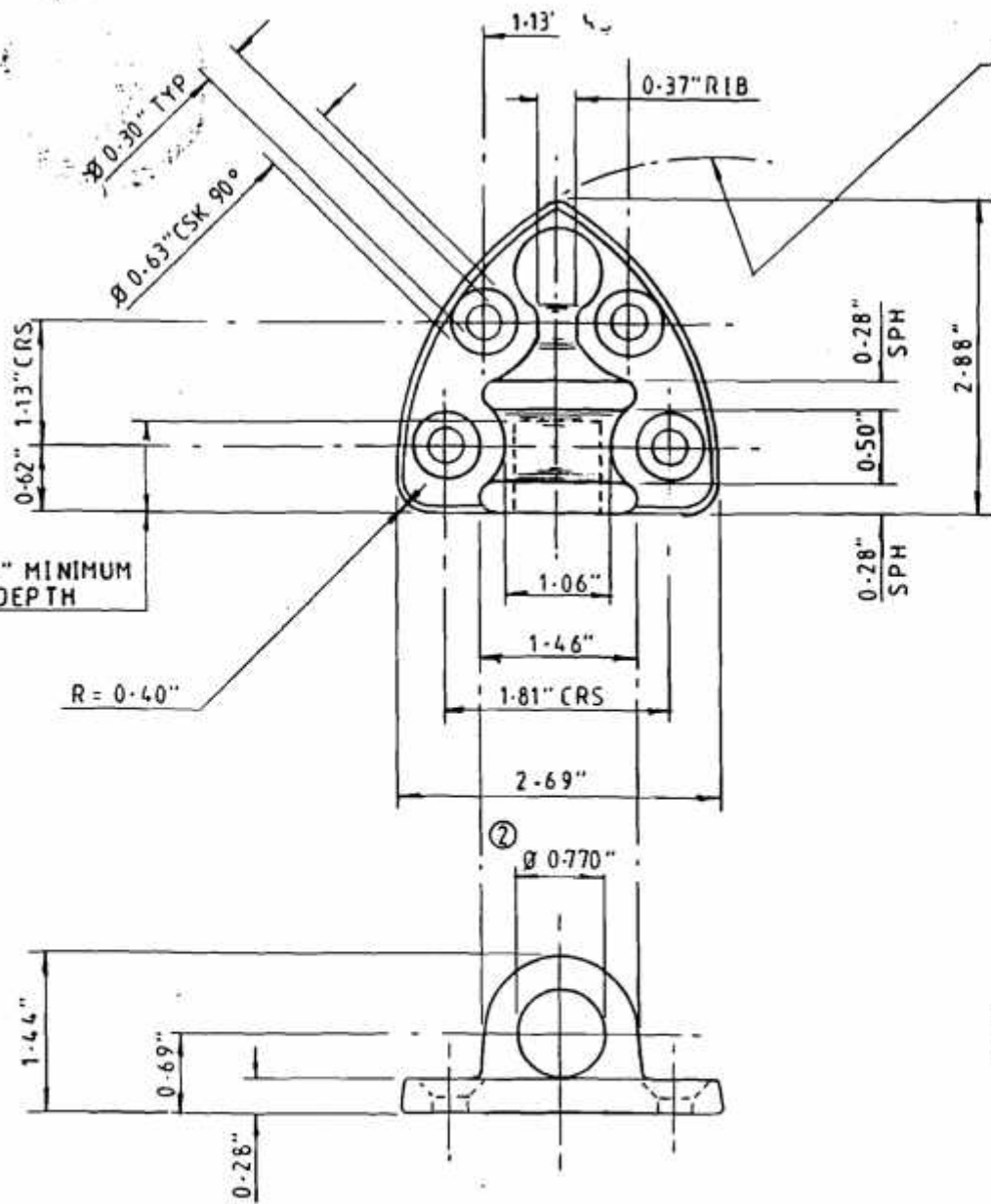
DATE 10/17/93
MATERIAL MAL' CAST IRON
DRAWN
SCALE

FINISH SEE CHART
TREATMENT
 (2) 3rd '93 WAS 0.68"
 (1) 3rd '93 ADDED

DRG -975
 -972
8292-971
 (SHT 4 OF 5)

(ISSUE 2)

TOLERANCE - IMP	METRIC
1 DEC PLACE	±.4mm
2 DEC PLACE	±.016"
3 DEC PLACE	±.004"
DRAFT = 5° U.O.S.	



NOTE:~
MINIMUM RADIUS TO ALL FILLETS AND CORNERS

985	SBM
982	GALV
981	SC
REF	FINISH

TITLE
**"HEAVY REVERSIBLE HINGE
 CUP NO 4"**
 For 30" x 36"

DATE 11/17/83
 DRAWN
 SCALE
 DO NOT SCALE

MATL
 MALL CAST IRON
 FINISH
 SEE CHART
 TREATMENT

②	JAN '93	WAS 0.80"
①	JAN '93	ADDED
REF	DATE	REMARK

DRG -985
 -982
8292-981
 (SHT 5 of 5)

(ISSUE 2)